

Liferay Community BugSquad

Liferay 6.2 CE Feature Review

This document is intended to be used to review and record observations for a specific Liferay Portal feature in an upcoming release of Liferay. The intention of the results is to ensure that there are not high impact bugs or usability gaps in new features coming into the next Liferay CE Release.

Instructions

1. Insert your name, email, and date into the table below.
2. Read the description of the feature and how to exercise the feature.
3. Obtain one of the latest Liferay+AppServer bundles from the below [Download Links\(s\)](#), extract, and run.
4. For help on getting started with installation and running Liferay, see the Quick Start Guide at <http://www.liferay.com/quick-start>.
5. Once Liferay is up and running, proceed with the guide.
6. Enter your review notes either inline or at the bottom of the form (if entering inline, be sure to highlight your comments for easy discovery).
7. When complete, return the completed form to james.falkner@liferay.com or post it on the BugSquad forum.
8. The completed forms will be entered into a document collaboration system and you will be notified and will be able to subscribe to updated by Liferay engineering for any follow-up conversations.

Review comments are open-ended and no specific format is needed. The Liferay engineering team is most interested in whether you are able to use the feature as intended, its controls are intuitive, menu titles make sense, and it is possible to complete the tasks for which it was designed.

While unrelated bugs you encounter are useful, you are not required to document any minor bugs you encounter that are not related to the feature being reviewed, however you are more than welcome to file these as well, and include them in your reports. Major bugs that prevent usability should be reported.

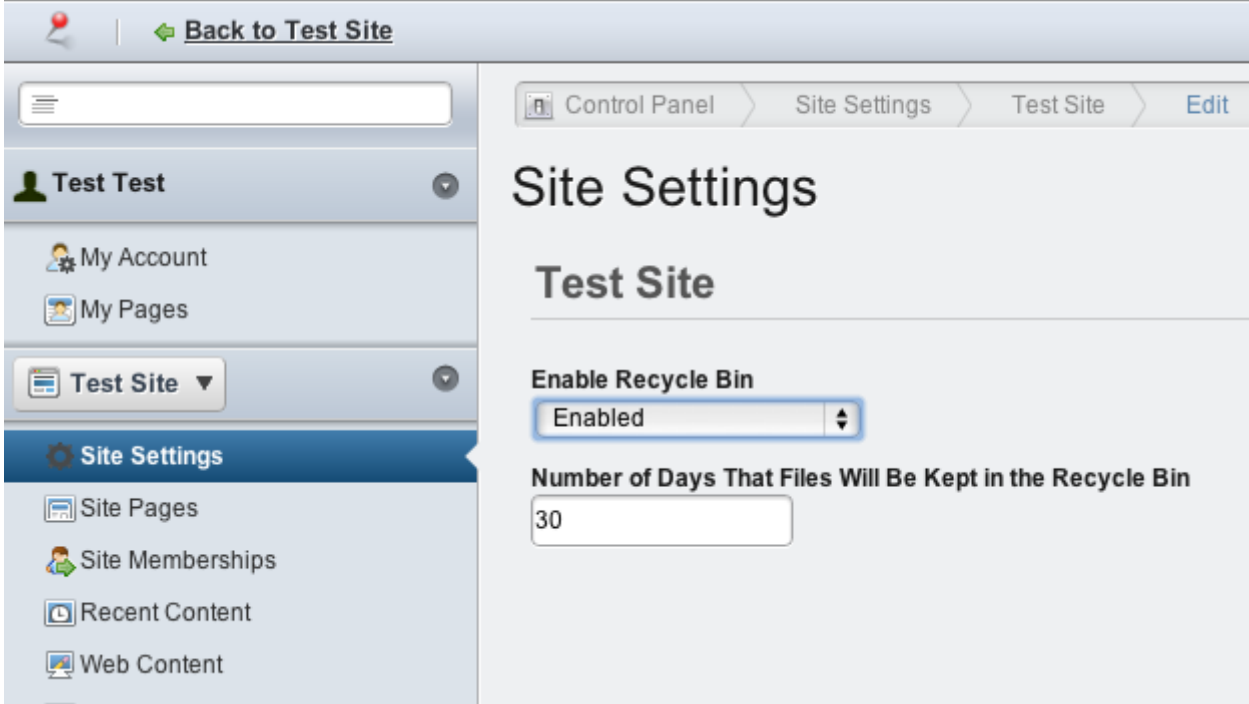
If you have questions, comments, or suggestions about what you are supposed to do or what you are experiencing, please post on the Community Forum under the “BugSquad” forum here: http://www.liferay.com/community/forums/-/message_boards/category/11406472 . You can also find many Liferay developers and BugSquad members on **IRC** (a public chat room). Details for connecting to IRC can be found on the [Participate page](http://www.liferay.com/community/welcome/participate) at <http://www.liferay.com/community/welcome/participate>.

Feature	Recycle Bin
Reviewer's Name	Joe Bloggs (Replace this)
Reviewer's Email	joebloggs@somewhere.com (Replace this)
Review Date	November 5, 2012 (Replace this)

Download Link(s)	Liferay Portal 6.2 CE M1 (bundled with Tomcat 7) Liferay Portal 6.2 CE M1 (bundled with GlassFish 3) Liferay Portal 6.2 CE M1 (Source Code) Liferay Portal 6.2 CE M1 Reference Docs (JavaDocs and more) Liferay Portal 6.2 CE M1 Plugins SDK Other Builds and Files (SQL Upgrade scripts, other app server bundles, standalone WARs, etc)
------------------	--

Feature Description	<p>The Recycle Bin is, as its name suggests, a way to recover content that is deleted from a Liferay Portal installation. In this case, items that are deleted (such as Blog Posts or Documents from the Documents and Media app, and other user-created content) are not really deleted. Instead, they are placed in the Recycle Bin, which can be periodically emptied (thus truly deleting the content forever), or the content can be recovered and restored.</p>
---------------------	---

Related Resources	http://issues.liferay.com/browse/LPS-26266 JIRA Story ticket representing this feature
-------------------	---

How to Review	<p>This feature currently supports recycling the following content/collaboration types: Blog, Wiki, Message Board, and Documents (from the Documents and Media Gallery) It is also possible to define recycle behavior for your own custom applications.</p> <p>1. Choose an application / content type from the above list for which to use as your test. In the example below we use Liferay's Documents and Media application, but you can choose any of the application types supported by Recycle Bin, and modify these instructions accordingly. Create a new page (or just use an existing page in the Guest site), and add your chosen application type. Note that if you elect to create a new site for this review, you may need to first enable the Recycle Bin for this site by visiting Control Panel -> Site Settings for your new site, and turning it on (be sure to click "Save" once you've chosen to enable the Recycle Bin!).</p>  <p>In this example, we will add the Documents and Media portlet to our page on our new test site:</p>
---------------	--

Test

Liferay > Test Site > Test

Documents and Media

Home

There are no documents or media files in this folder.

(0 of 0) (Total 0) 20

- Home
- Recent
- Mine
- Basic Document
- Contract
- Marketing Banner
- Online Training
- Sales Presentation

Add Sort By Manage Search

2. Create some sample content using the above application. In this example, we will upload a single document by clicking the "Add -> Basic Document" option. You can see the document here:


Test

Liferay > Test Site > Test > Home

Documents and Media

Home

Access these files offline using Liferay Sync.



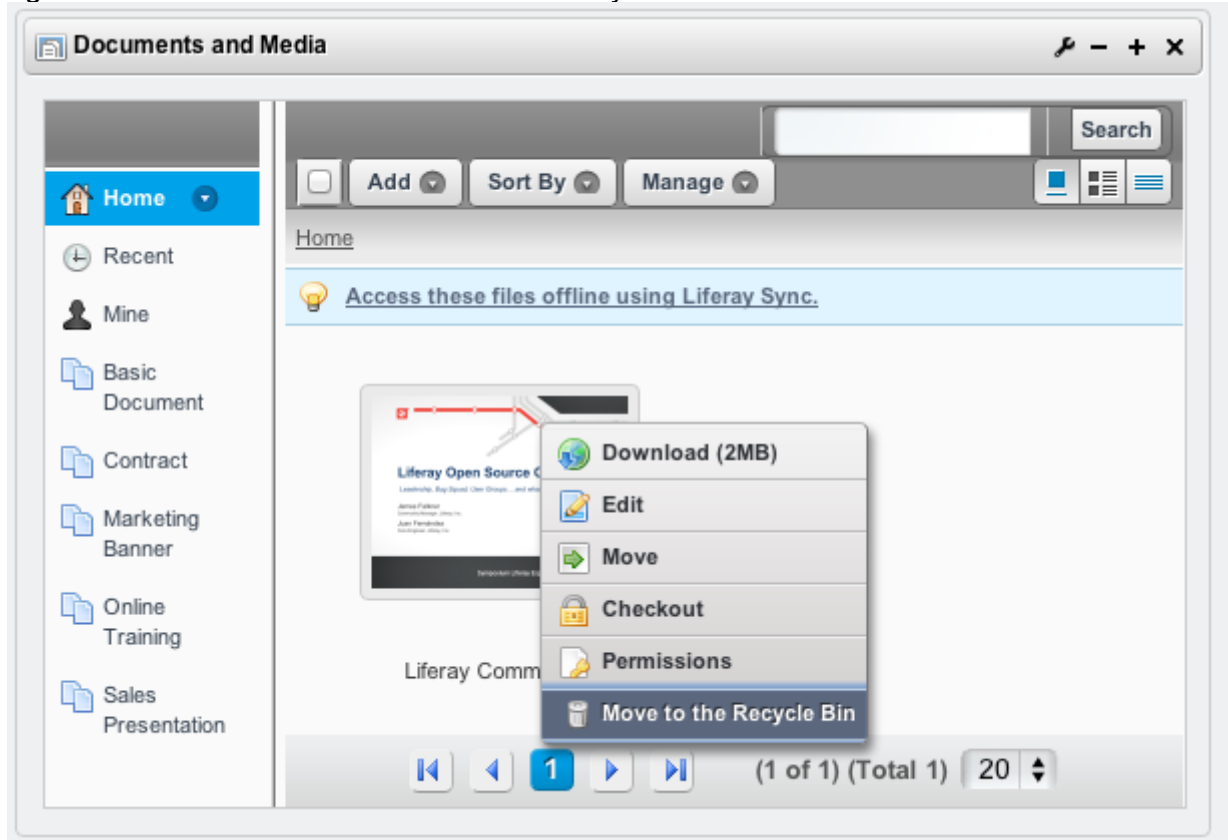
Liferay Community

(1 of 1) (Total 1) 20

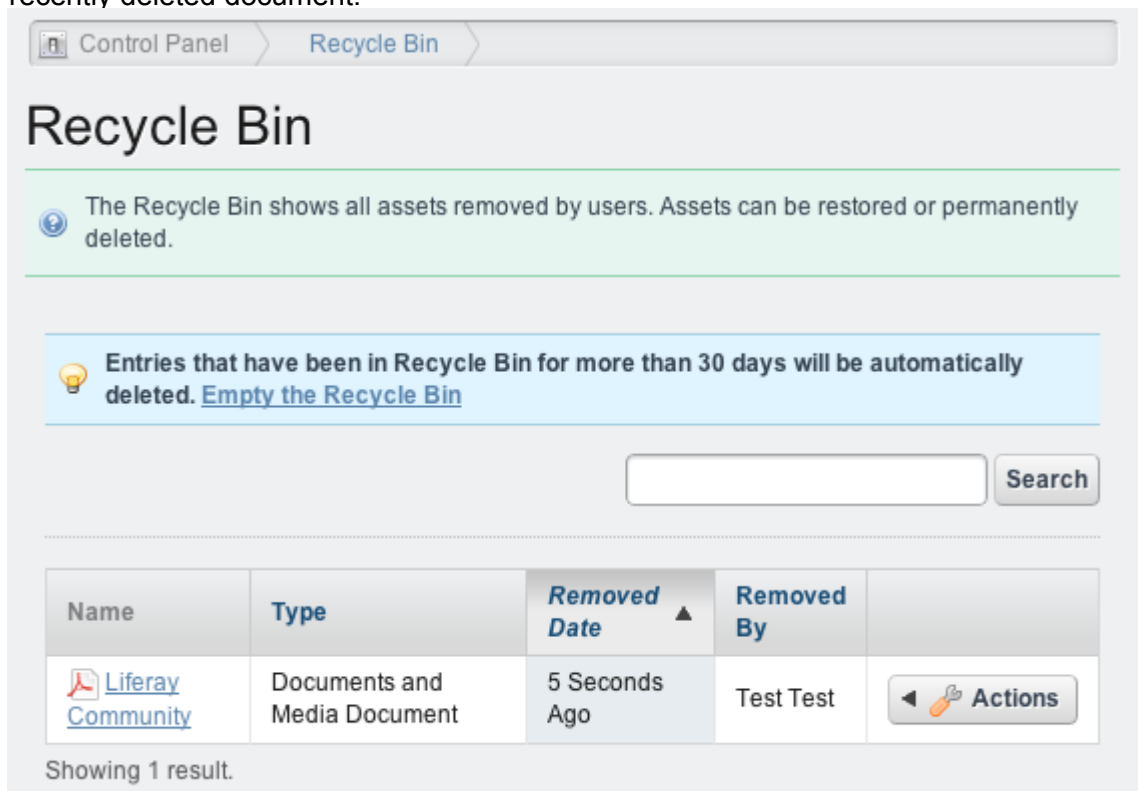
- Home
- Recent
- Mine
- Basic Document
- Contract
- Marketing Banner
- Online Training
- Sales Presentation

Add Sort By Manage Search

3. Now, move the document to the Recycle Bin by clicking the small arrow that appears in the upper-right hand corner of the document's icon when you mouse over the document:



4. Now, let's bring the document back! Visit Control Panel -> Recycle Bin. You should see the recently deleted document:



5. Select the "Actions" Flyout on the right, and choose "Restore". Now return to the page via the supplied link (or click "Back to Test" at the top left of Control Panel). You should see your document

restored to its original glory. Congratulations!

Feel free to experiment with other asset types (e.g. Wikis, Message Boards, or Blogs). The concepts introduced here are the same. Note that there are many improvements planned for the Recycle Bin, such as supporting even more content types, ability to mass-restore, and others. Before reporting a potential enhancement, check the Story ticket at <http://issues.liferay.com/browse/LPS-26266> to see if your idea is already being implemented.

Reviewer's Comments:

(Your comments go here).