

Google Cloud and Liferay



Silvia Bellucci
Customer Engineer
Google Cloud Italy



Our mission

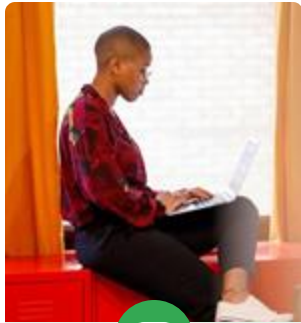
Accelerate transformation with Google's leading, AI-powered Cloud technology

Our strategy

Google Cloud brings together expertise and innovations from Google, infusing industry-leading AI into six product lines to help customers transform:



Infrastructure



Developer



Data



Security



Agents &
Applications



Google
Workspace

AI Models & Platform

Global network

Benefit from Google's deep AI expertise and continuous advancements from Google DeepMind



Leverage our deep AI expertise from delivering AI products and experiences to billions of consumers worldwide



Stay at the cutting-edge with access to **Google DeepMind's** rigorously tested AI breakthroughs

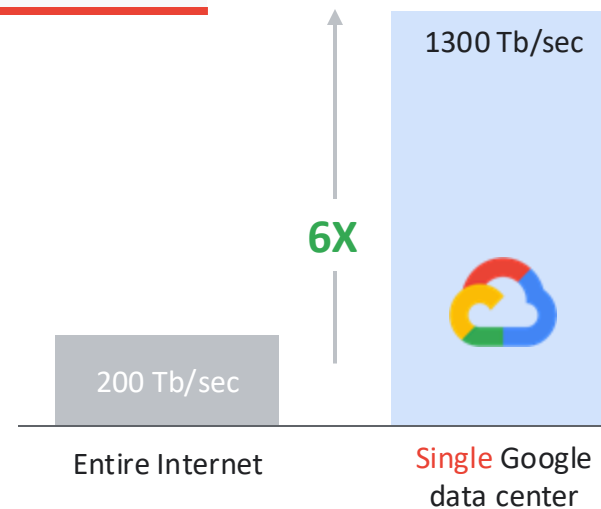
Planet-scale network

Battle-tested planet scale network

20%-25% global egress

Serving 10+ products with more than 1B+ users across the world

A single GCP data center has a bi-sectional bandwidth of nearly 6 times the entire Internet





Regions

Regions consist of 3 or more zones housed in 3 or more physical data centers

* Mexico, Osaka, and Montreal have 3 zones within 1 or 2 physical data centers and are in the process of expanding to at least 3 physical data centers. For more information, please see ['Geography and regions'](#).

Security

Zero-trust security that can protect your data from the largest attacks

Prevented one of the largest DDoS attacks at 398 million requests per second



5+ million

reCAPTCHA Enterprise aggregates
5+ million websites to understand
fraudulent behavior by bots

“



Google Cloud Cloud Armor protects
the service against cyber breaches
and distributed denial of service
attacks to keep it running
uninterrupted.”

Built into the platform at no additional cost or config



All data, by default, encrypted
at rest



All VM-to-VM traffic within a VPC
network and peered VPC networks is
[encrypted](#)



L3/L4 volumetric DDoS
protection for every workload

Performance (Latency & Throughput)

Google Cloud provides the best network performance with state-of-the-art dedicated backbone

3x

Google Cloud has up to 3x the network throughput for VMs in the same region.

[\(source\)](#)

#1

Google's machines outperformed competitors in network and storage I/O throughput.

[\(source\)](#)

20%

Google has 20% lower cross-region latency compared to other cloud providers.

[\(source\)](#)

35m

Citrix real-time, real user monitoring shows Google Cloud CDN has the lowest mean and P75 & above latency compared to other CDN providers

[\(source\)](#)



By moving to Google Cloud, Bitly saw another significant benefit: **improved performance** by using Google's global network infrastructure. These improvements include up to 50% decrease in latency from the client to a service for resolve time, connection time, and download time.



"We tripled our traffic in 90 days with millions of requests per second and saw a 50% reduction in latency with Google Cloud Load Balancing and Cloud CDN." - Omar Hasan, VP of Operations

We help organizations build **quickly, securely, and cost effectively** with **infrastructure** that is optimized for AI, modern, enterprise, and distributed workloads.



Train, tune and serve AI workloads with exceptional scale and efficiency — powered by **AI Hypercomputer**, with a wide choice of **leading AI accelerators** including TPUs & GPUs.



Run and manage modern, containerized applications with **GKE, Cloud Run, and Apigee**.



Easily migrate to the cloud and optimize enterprise workloads like VMware, SAP, and Oracle with **high reliability, security, and price-performance**.



Build on a cloud designed to run on-premises, edge locations, or across other clouds with **Google Distributed Cloud & Cross-Cloud Network**.

We help organizations **seamlessly connect their data to AI** to fuel innovation with a unified, intelligent, and open data cloud



Easily connect all of your data to AI.



Manage all data with a unified data analytics platform, BigQuery.



Run all your data where it is with the most open data cloud in the industry.



Get enterprise-grade efficiency, scale, security, price-performance, and reliability.

Market-leading, AI-ready Data Cloud

4X

BigQuery and Vertex together deliver up to 4x faster performance and up to 3x more cost efficiency than other data warehouse and AI platforms¹

600%

Growth YoY of customer use of BigQuery to manage unstructured data including images, audio, and video formats via object tables¹

4X

faster transactional performance with AlloyDB compared to standard PostgreSQL¹

10B

Spanner supports vector searches scaling to more than 10B vectors²

Source: Google Cloud internal data, March 2024¹

Source: Google Cloud internal data, July 2024²

Proprietary + Confidential

Google Cloud



Our Google Cloud Marketplace vision

Marketplace becomes the

channel for Google Cloud, providing a

solutions to **easily discover**

Google Cloud

Solutions, services

primary online distribution

Digital, direct, flexible, and self-service

universal catalog of

buy, and use on and with

Global customers of all sizes

Google (1st party), Google ecosystem (3rd party)

Liferay in the Google Cloud Marketplace



Diverse selection



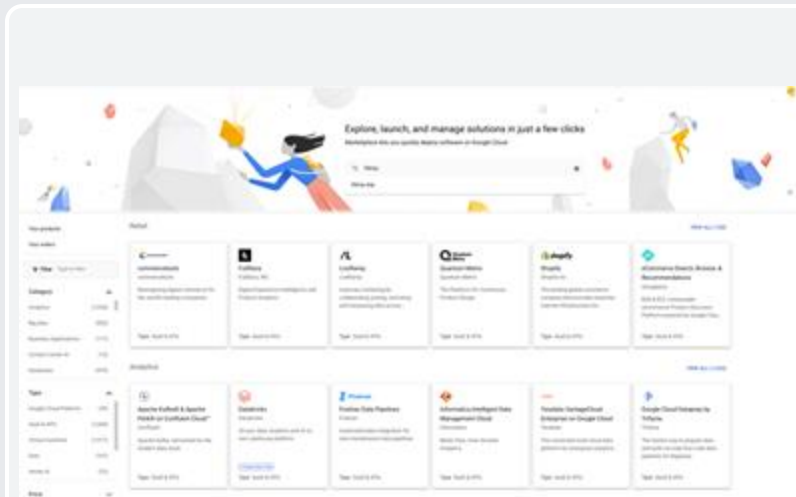
Customized deals



Robust controls



One bill from Google & commitment burndown





customer summit